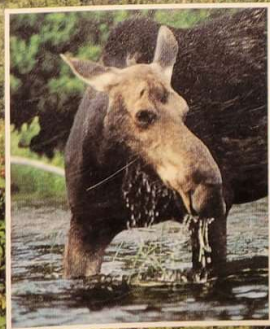


Best Management Practices for Erosion Control & Water Quality Protection in Northern New England Forestry Operations



Mead

Paper Division

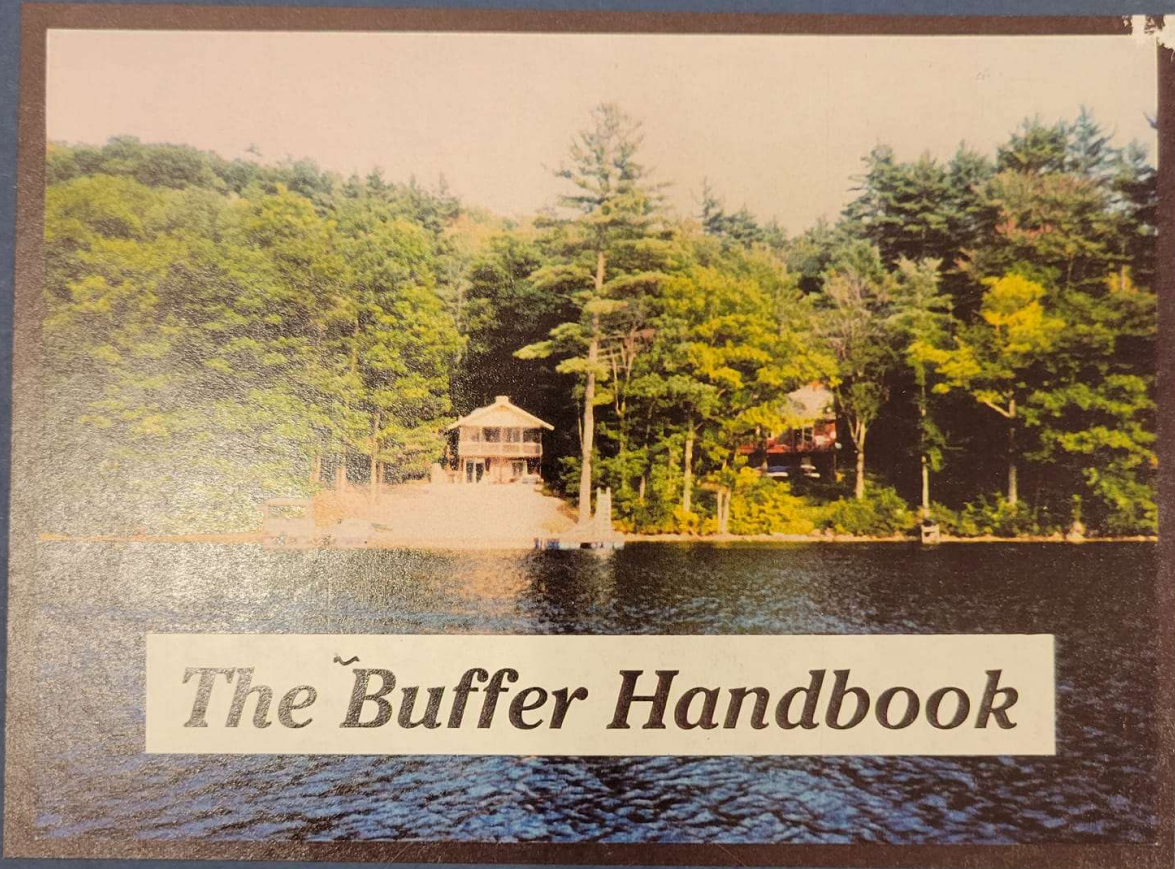
Rumford, Maine

Spring 2000

A photograph of a forest stream with a fallen log and rocks. The stream is surrounded by dense green foliage and trees. The water is clear and flows over rocks. The log is partially submerged in the stream.

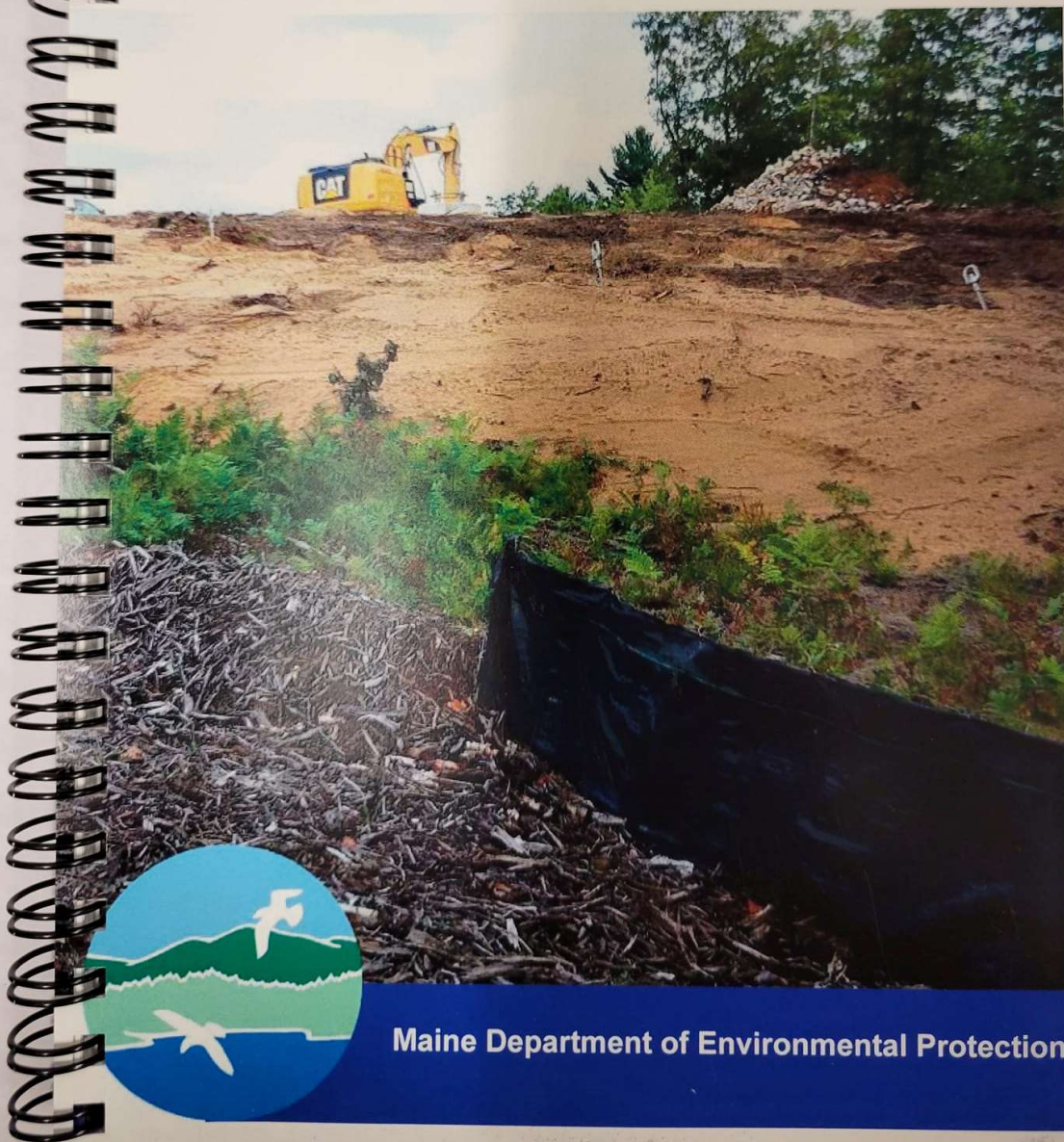
Best Management Practices for Forestry: Protecting Maine's Water Quality

DÉPARTMENT OF CONSERVATION
MAINE FOREST SERVICE
FOREST POLICY AND MANAGEMENT DIVISION



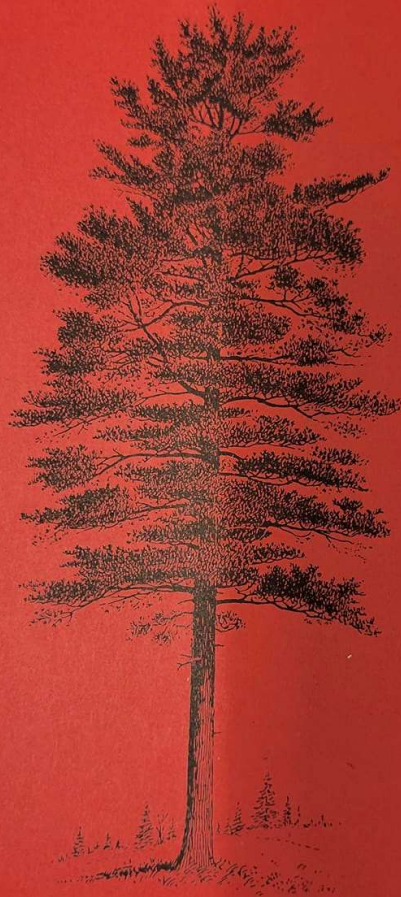
The Buffer Handbook

Maine Erosion and Sediment Control Practices Field Guide for Contractors



Maine Department of Environmental Protection

FOREST TREES *of* MAINE



Bulletin 24
(Tenth Edition)

MAINE FORESTRY DEPARTMENT
AUGUSTA, MAINE

1973

Forest Trees of Maine



**Twelfth Edition
Maine Forest Service
Department of Conservation
1995**

GRAVEL ROAD MAINTENANCE MANUAL

A Guide for Landowners on
Camp and Other Gravel Roads



Kennebec County
Soil and Water
Conservation District



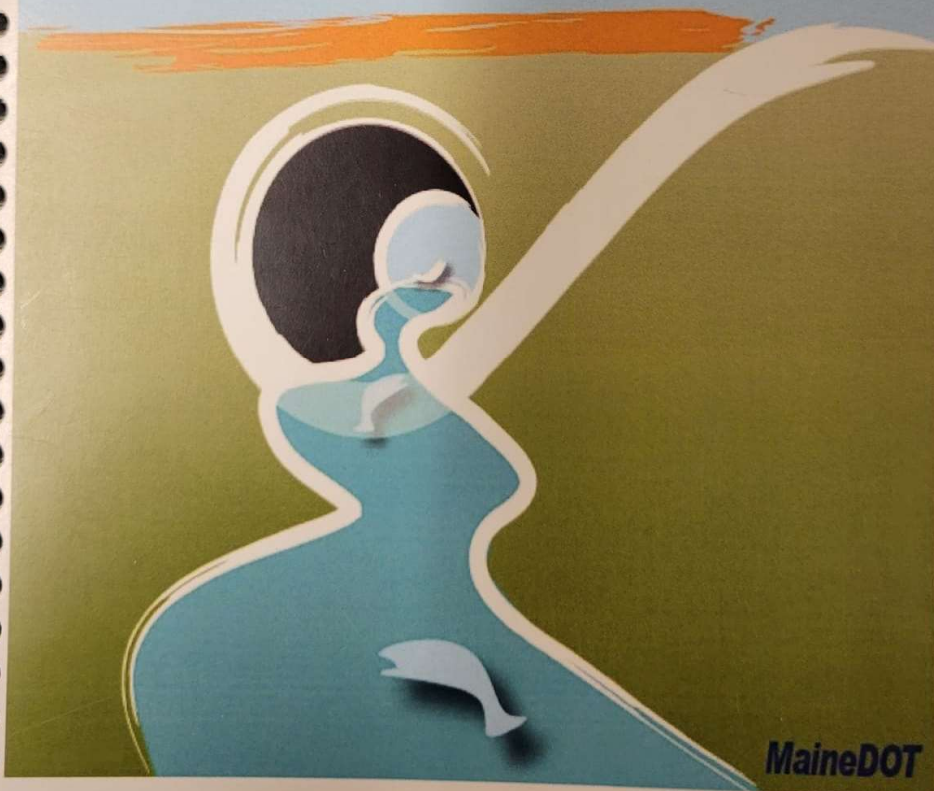
Maine Department of
Environmental Protection
Bureau of Land and
Water Quality

April 2010

*State of Maine Aquatic Resources
Management Strategy Forum*

STREAM SMART ROAD CROSSING

Pocket Guide



MaineDOT

MAINE EROSION AND SEDIMENT CONTROL BMPS



Bureau of Land and Water Quality
Maine Department of
Environmental Protection

MARCH 2003 DEPLW0588

